

The Exams Office Conference 2022: Back to Basics



Agenda

- BTEC Recent centre actions & Deadlines
- BTEC Contingencies
- Preparing for external assessments
- Key dates – GQ
- GQ Contingency
- Support



BTEC Recent centre actions & Key dates

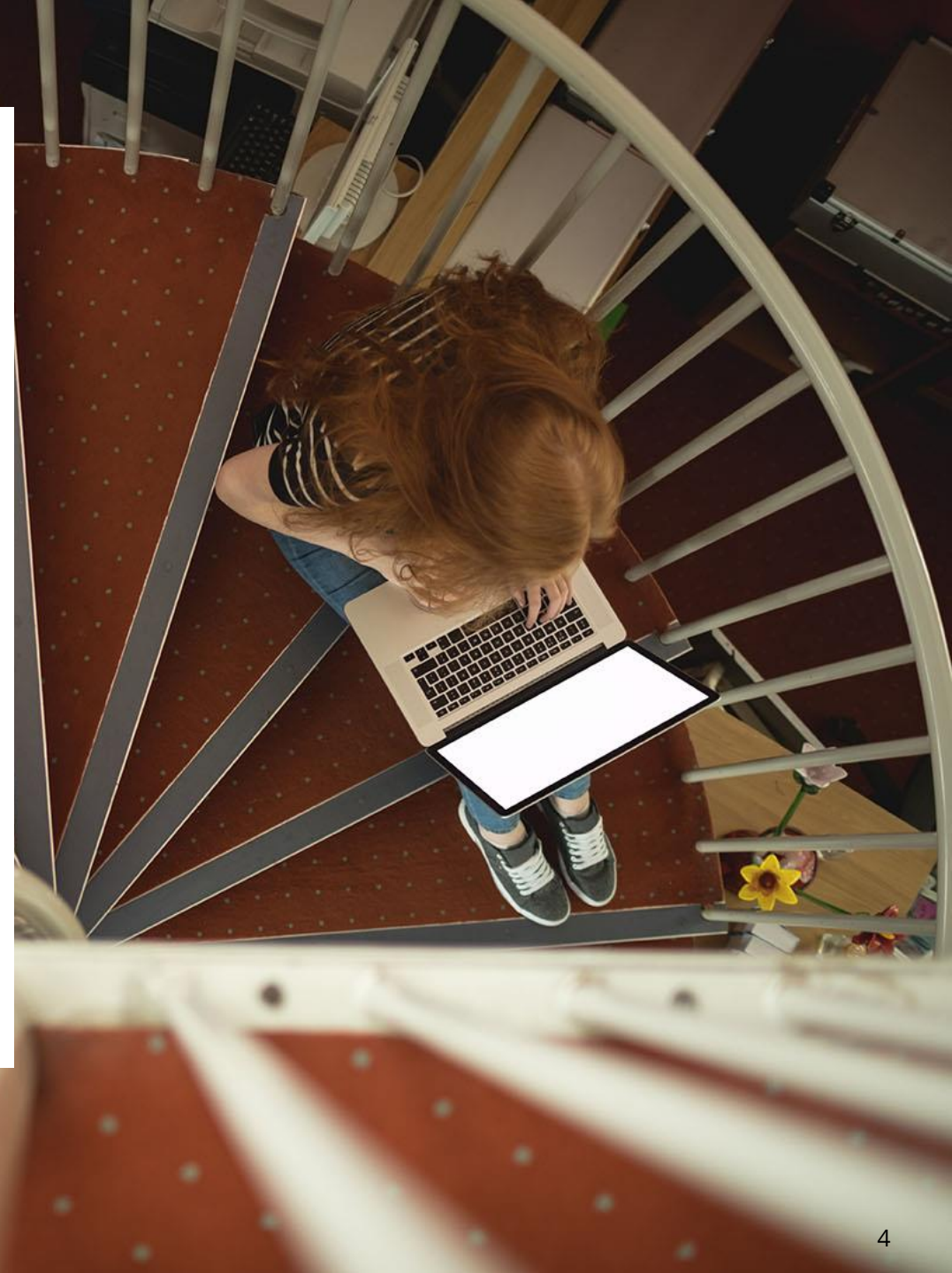
Action	Dates
Question Paper Despatch for February	Despatched from 25/01, and majority should be in centres. Ongoing despatches for late entries.
BTEC UTAG and appeals	13/01 – BTEC U-TAG results day Deadline for learners to raise an appeal 27 January 14/02 – Deadline for stage 2 appeals
BTEC results days	Jan – 23/03 centre, 24/03 learner Feb – 06/04 centre, 07/04 learner March – 27/04 centre, 28/04 learner
Entry deadline for June 2022 External Assessment	24/03 entry deadline* 24/04 amendment/withdrawal deadline

BTEC contingencies, adaptations and streamlining

A reminder we already have some contingencies in place including recent U-TAG activity, adaptations and streamlined assessment.

[Visit our Teaching, Learning and Assessment for 2022 web page.](#)

[Reminder - Streamlined assessment](#) functionality is now live.





Preparing for external assessments

We have a [free on demand e-learning session](#) – available now

4 mains docs [External Overview document](#), [ICEA](#), Admin Support Guide – subject & Unit based

[Managing Absences](#)

[Requesting non-interactive PDFs article](#), and [modified papers on demand e-learning module](#).

Entry Deadlines GQ

A level, GCSE

21/02 entry deadline, 21/04
amendment deadline, 22/04 Higher
late fees. [GCSE History entry code
calculator](#)

AS/A level Maths paper 3 now has 2
Question booklets

International GCSE

21/03 entry deadline, 21/04
amendment deadline, 22/04 Higher
late fees





GQ Summer 2022 Adaptations and Contingency

Advance Information on **7th**
February

[Advance Information](#), optionality,
NEA / fieldwork adaptations.

[Summer 2022 support page](#) &
[FAQs](#)

Social Media

- Dedicated support pages for Exams Officers
- Providing up to date news and updates
- Offer support and guidance via direct message and comments
- Mon – Fri, 8am to 5pm

 **Facebook:** Pearson Exams Officers Support

 **Twitter:** @PearsonEOhelp



Support

[On demand e-learning](#)

[Video library](#)

[EO Newsletter](#)

[VQ Bulletin](#)

[GQ Bulletin](#)

[Support portal](#)



Support Articles



[Support Home](#) [Browse Articles](#) [Contact Us](#) [More](#) [Sign In](#)

[Clinical & Talent Assessment](#)
[Digital Learning & Support](#)
[Orders & Order Queries](#)
[Qualification Services](#)

Cont

Tell us about yourself and the issue you're having and we'll connect you with the right person to help you. All fields marked with an * are required.

[Browse Article](#)

[All Topics](#)

Filter Articles by Keyword...



By Role...

By Qualificat...

By Subject...

I Need Information A...

ARTICLE NAME

VIEWS

DATE
MODIFIED

Pearson Support Portal (Staff at Centres & Associates): Creating A Case Record

Explains how to create a case record on the Pearson Support Portal for centre staff and Pearson Assessment Associates.

95774

November
17, 2021

Case, Qualifications: Technical Support, Assessor/Internal Verifier (WBL), Pearson Associate, Qualification-browsearticle, Pearson Support Portal, Teachers & Department Heads, Exams Officers, Quality Nominees

General Qualification Results

- [Results Dates: Edexcel Online & EDI File Release Day/Times](#)
- [Statement Of Results: \(International Centres\)](#)
- [Results Reports: General Qualifications Statement of Results](#)
- [Results Reports: Breakdown Of Candidate Results](#)
- [Results: Grade Statistics](#)
- [Raw and UMS Marks](#)
- [A* Grade Calculation For A Level \(International\)](#)
- [Results: Missing Academic Results](#)
- [Results: X And # Grades](#)
- [Results: Examiner Reports](#)
- [Results: Moderator Report](#)
- [UCAS Applications - Results Files FAQs](#)
- [Results: Sending Results To A University Or A Third Party \(International Students Only\)](#)
- [Special Consideration: GCSE/GCE Checking Mark Applied To Grade](#)

Vocational Results

- [Results: Viewing Overall BTEC Results](#)
- [Onscreen Testing: Test Results Released](#)
- [A2C: Receiving Overall BTEC Results by EDI File](#)
- [Results Reports: BTEC NQF Statement Of Results](#)
- [Viewing Overall Results For BTEC Triple Grades \(e.g DDD\) In EDI Files](#)
- [BTEC Nationals: 'Near Pass' N Grade](#)
- [Results: Understanding BTEC Grades](#)
- [Special Consideration: NQF BTEC Checking Mark Applied To Grade](#)

Thank you





Pearson